



55, George Street,  
, W1U

£1,975 Per Week,

NAPIER WATT

T: 0207 935 0011  
E: [enquiries@napierwatt.co.uk](mailto:enquiries@napierwatt.co.uk)  
W: [napierwatt.co.uk](http://napierwatt.co.uk)

35 Berkeley Square, Mayfair, London, W1J 5BF









## Description

A stunning three-bedroom apartment set within this prestigious block on the corner of Baker Street and George Street. This second floor lateral property of approximately 1,765sq ft consists of spacious living room, open plan kitchen, master suite with walk-in wardrobe and en-suite with bath and shower, two further bedrooms, one en-suite and a separate bathroom. From the sleek design to the large windows, this home has a light, airy and contemporary feel. Features include comfort cooling, 24-hour porter and passenger lifts, not to mention a wonderful communal garden. Available, furnished.

3 Bedrooms : 3 Bathrooms : Porter : Comfort Cooling : Lifts : Council Tax Band G : EPC Rating B

## Key Features

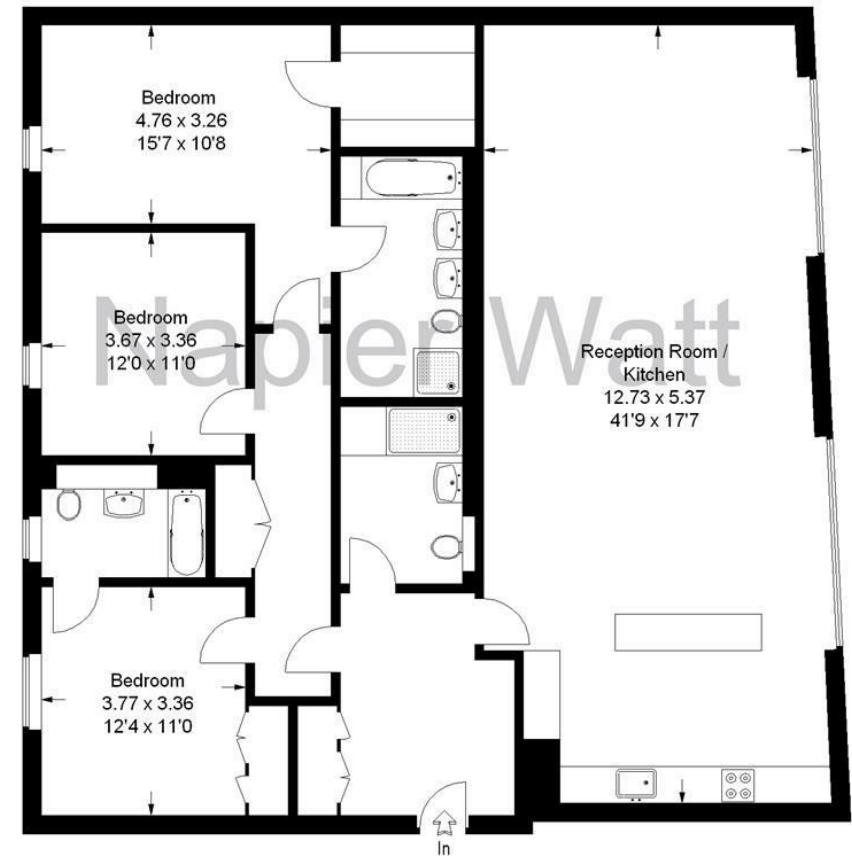
- 24-HOUR PORTERAGE
- CCTV
- LIFTS
- 2ND FLOOR
- AIR CONDITIONING
- PARKING
- FLOOR TO CEILING WINDOWS
- FURNISHED

## Terms

Fees & Charges: Tenancies exceeding £100,000 Per annum £480 inc VAT, Tenancies where a company is a tenant £480 Inc VAT.

## George Street

Approximate Gross Internal Area :- 164 sq m / 1765 sq ft



This plan is for layout guidance only. Not drawn to scale unless stated.

Windows & door openings are approximate.

Whilst every care is taken in the preparation of this plan, please check all dimensions, shapes & compass bearings before making any decisions reliant upon them. (ID11813)

IMPORTANT: We would inform prospective purchasers that these sales particulars have been prepared as a general guide only. A detailed survey has not been carried out, nor the services, appliances and fittings tested. Room sizes should not be relied upon for furnishing purposes and are approximate. If floor plans are included, they are for guidance only and illustration purposes only and may not be to scale. If there are any important matters likely to affect your decision to buy, please contact us before viewing the property.